

The Missing Sprue

The quarterly gazette of Coventry and Warwickshire IPMS



Welcome to the Missing Sprue!

This quarterly Gazette is for Coventry and Warwickshire club members to show off recent builds, share techniques, and inform the club of forthcoming shows etc.

The pandemic restrictions goalposts have changed in the last month, and we will hopefully be in a better position concerning COVID-19 later this month.

As most are aware the club show was cancelled on the 18th June, after consultation with the museum, a knock-back I know, but possibly the right thing to do.

I will be concentrating on the SMW 2021 and sending updates on our table display etc

Thank you for your patience and understanding through these last 18 months, I'm sure we weren't expecting the pandemic to last this long, but your input on the Facebook group and "zoom" meetings has kept everyone reasonably sane.

The shows have restarted as well, we are booked into some shows- see events list.

SMW 2021 table theme update

The theme "**What's Your Emergency**" has been carried on to this year.

We have around **45** models promised, with **37** built so far, I will send out the list for members to update and add builds to later this month.



Source: Redfern archives

Paul "Red" Redfern – editor and part time disciplinarian.

Articles required



Source: internet

If you would like to add/write an article, write a review of a Show, Model shop, modelling Techniques, Articles or even submit photos for the next edition of the Missing Sprue, please contact **Paul** via e-mail cwipms2019@gmail.com

Club AGM 2021

The Annual Club AGM has been rescheduled again for July 2021 and will be held at the Midland Air Museum in the Argosy centre.

This date is only provisional, and subject to change, and e-mail with a confirmed date will be sent to you.

The AGM will take place from 2000hrs through to 2130hrs (Est) any business to be proposed /discussed should be sent/given to Branch Secretary prior to the date shown.

If you have an item to add to A.O.B, and cannot make the AGM, please send to the Editor (Paul) who will ask on your behalf.

The following will be discussed:

The Treasurers report – Carl Lewis

The Secretary's Report- Richard Brooker

The Event Organisers Report- Paul Redfern

A.O.B- Proposals

Election of secretary

Election of Treasurer

Note: This date is subject to change as the COVID Restrictions/Rules change

In Memoriam

Mel Bromley

Mel was always a "must see" character at many model shows and always great to have a chat with. A fair number of models were bought from Mel - he always had stock that was very interesting. He'll be sorely missed on the model show circuit, a true gentleman. Mel passed-away in early May.



Humour Time

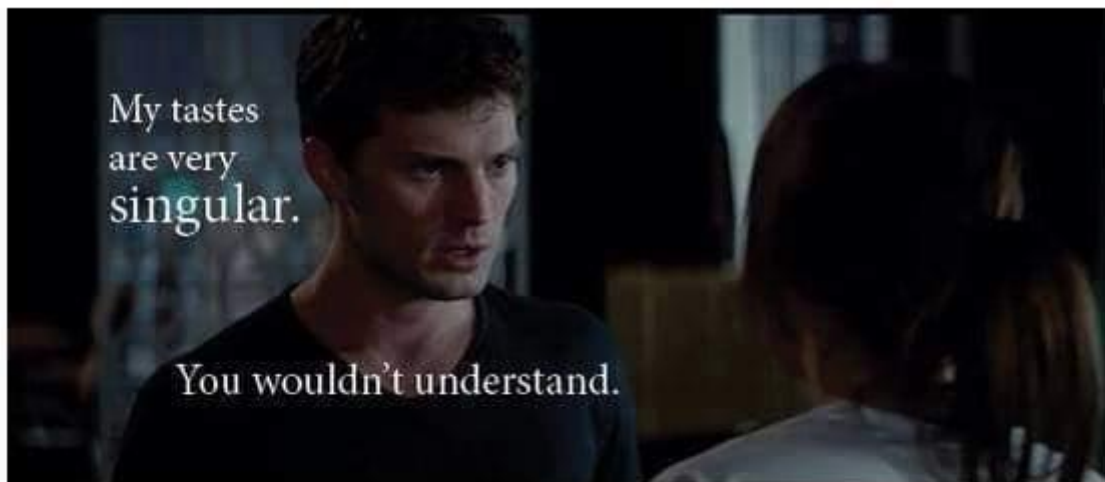
The moment when you see...



how much you spent on models this year



Thomas das Tank Engine





Oh look, a penny!



**He might be thinking of
another woman...**



**Do I do Chipping with the sponge
or with the airspray technique?**

Visit to the National Arboretum

Located 45 minutes from the centre of Coventry, and well sign posted off the A38 heading towards Burton upon Trent.

There is over 150 Acres of Parkland.

Well worth a day out, but don't expect to see it all in just one day.

Only £4 parking and free entry, at the time of writing COVID rules apply and guided tours are extra. There is an onsite Cafe and shop which is a little expensive so, I would advise taking a picnic and some drinks.

There are lots of benches to sit and rest, but if you are wearing your best frock take a tea towel to sit on, the site is dog friendly in parts. If you get there when there is a military gathering , expect it to be very busy (although you may be treated to a concert by a Regimental Band) hope you enjoy your visit , I think I'll be going more often .

Lots of on-site information





Military and Civilian Memorial's



Lots of Nature



Denis Jones

WHAT-IF FOCKE-WULF TA183 ZWILLING (TWIN) FIGHTER

As you may or may not know, I am quite obsessed with this jet "Luftwaffe '46" aircraft and I have made several versions of it over the past 15 years. It was a Focke-Wulf blueprint design, of which one prototype was made, but not flown. Also, its similarity to the Russian MIG-15 is very noticeable.



The 1/48th scale kit originally by Amtech in 2000 then released by Tamiya in 2002, is a very good "Weekend Kit" in my books. In terms of it takes a short time to build and complete a good example of the aircraft. It has now also been re-issued by Academy. Whenever I have seen any for £20 or less, I have bought them. The Tamiya kit has incorrect decals inside, from their FW190, but does come with a kettenkraftrad tracked towing vehicle.

Previous schemes I have built are 1946 / 47 day and night-fighter Luftwaffe versions, Kriegsmarine German Navy (with folding wings), Japanese Army Air force, and a British Aircraft Establishment captured / test example...could have been flown by Captain Eric "Winkle" Brown. This was displayed last year at the Clubs' model shows we attended.

This time I have gone down the Zwilling or twin route, as I found I had another pair of the 1/48th scale kits. Very similar to another blueprint twin designs the Luftwaffe could have done for the ME109 and even the Dornier 335.

First, I was able to build, paint and complete one of the fuselages which would have the cockpit fitted to it. Then I created out of plastic card and filler, a streamlined insert to fit into the other fuselage, to blank off where the other cockpit would have been. Both fuselages had the pair of inner 30mm cannon ports blanked off too.

Next, I devised a straight wing section, to match the aero foil shape of the two outer wings and to join the two fuselages together. I added some brass tube to give it extra strength. Once joined the model was then sprayed in the Luftwaffe blue (Tamiya spray AS-3) to act as a primer, as well as the paint for the underside of the fuselages and wings. I also decided on adding the usual "Defence of the Reich" stripes at the back of both fuselages, choosing red and white. The overall colour scheme I decided on was the twin green splinter type camouflage, with sprayed on spots, typical for late in WW2. There is a fake canopy painted on the RH fuselage.

What this kit is noted for as well is the 4 air to air missiles you get with any of the manufactured versions of the model. These can be used on other later Luftwaffe aircraft as possible what-if weaponry. I made up a set of four and painted them in the usual quartered two-colour scheme I have painted them in before. These will be fitted to the outer wing panels (with a pair of the drop tanks fitted to the straight wing, joint section) and other breakable parts, when the model goes out on display at a show.

Markings added were from the kit simple crosses, swastikas, and commander chevrons. Weathering was kept to a minimum. I have now purchased a larger 1/48 German MAN vehicle, by Tamiya, to act as the tow truck for the aircraft.

THREE VIEWS OF THE COMPLETED MODEL





Richard Brooker

The Last Stand of the IX (9th) Legion

1/16 - 120mm Miniart figure conversion and re-sculpt. Using Reedees Miniatures replacement heads.

Depicting the final stand and eventual massacre of a Vexillation of the IX (9th) Legion, at the Battle of Camulodonum. Faced by the combined forces of the Iceni tribe, led by Boudicca. Set in 1st Century, near modern Colchester Essex the ancient capital of Roman Britain.

Using the Miniart 1/16 Legionary kit as base for all the figures in the scene, I first cut off all the kit parts, like tunic around the upper arm section that attached to the layered armour. I then reconfigured the arms and legs. The kit parts when formed come hollow in the kit, so I added styrene sheet ends to the joints with metal pins inserted at shoulder, elbow, hip and knee joints to create new dynamic poses. Then I locked the Arm and Leg joints with scraps of styrene and superglue.

I used some replacement character heads from a company called Reedees Miniatures. These fitted the Miniart kit size perfectly and give an individual personality to each figure that helped bring out the build in painting.

Once all the figures were converted I resculpted detail like their tunic, adding breaches, boots and leg protection and warmers as worn by the Romans in ancient Britain. These changes also created unique looking figures for the final scene.

The most converted figures were the kneeling Signifier (standard bearer) and Tesserarius (officer with the ball ended staff). The Signifier was depicted with chain mail armour to distinguish him from the common Roman soldier. He would be the rallying point for any legion, protected to the last man as in my scene. The Signifiers chain mail was sculpted in a mix of Greenstuff/magic Sculpt putty. His visored helmet used one of the kits faces converting it to face shield distinctive on the field of battle that would have put fear into the enemy. The Tesserarius was the first figure in the scene I converted and painted and loved his slightly arrogant and confident look; he would have commanded respect in any battle.

The shields were distressed to show the intensity of the battle, with the Iceni shield, helmet, and Roman standard all scratch builds. The bull design on the Roman Scutum Shields could have been used by the 9th, it was apparently used by legions as a religious symbol of Mithras (bull) who was fearless charging at their enemy in battle. I thought this a fitting tribute to brave Roman warriors who were fighting to the last man.

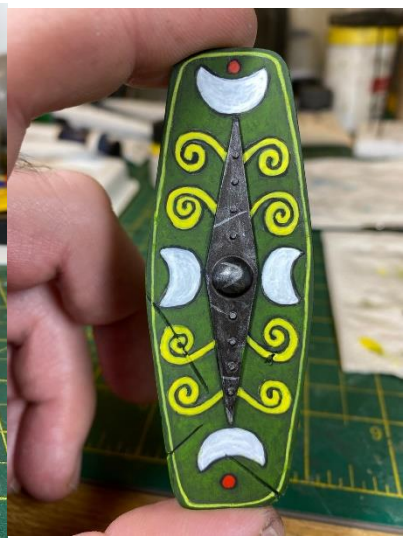
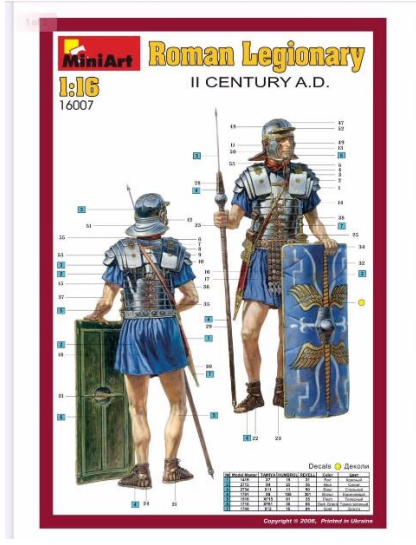
The figures were painted with a mix of Jo Sonja acrylics for skin tones, oils for the clothing and weathering and Alclad II, Tamiya and Mr Metal for the metal work, swords, helmets, and armour.

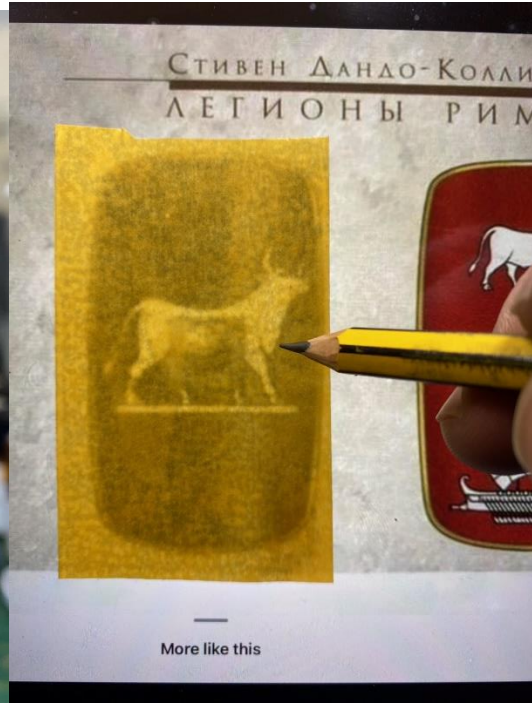


20:26 Thu 4 Feb

miniart-models.com

100%







Marcus White

2021 Up-Coming Show Flyers

Avon Show 8th August

IPMS AVON

Scale Modelling and Wargaming Show
Thornbury Leisure Centre BS35 3JB
Sunday 8 August 2021



Stoke on Trent Model show 15th August

 **Stoke On Trent Model Club (IPMS)** 
Hosts


**STOKE ON TRENT
MODEL SHOW
& FIGUREWORLD WEST
Sunday, 15th August
2021 10.00 - 16.00
Prestwood Centre
Staffordshire
County Showground,
Weston Road,
Staffs, ST18 0BD**

**contact us at ipmsstokemodelclub@gmail.com
Info on Facebook page SOT Model Club (IPMS)**


Blue Lamp show 10th October 2021

BLUE LAMP MODEL EXPO

Saturday 10th October 2021
10am - 4pm




Club Model Displays | Competitions |
Stall Holders | Raffles | Refreshments & More...



Presented by the
West Midlands Police Scale Model Club

Tally Ho Conference Centre, Pershore Road, Edgbaston, Birmingham, B5 7RN
For more information please email: r.d.scott@west-midlands.pnn.police.uk



Source: IPMS UK

REME Museum show 16th October 2021 (Provisional)



Source: IPMS UK

Scale Model World 13th &14th November 2021



Source: IPMS UK

Recent Builds

Some of the recently completed builds so far, from members of the club

Peter Rollins





Sam Johnson







Derek Docker



July 2021

Dave Carter



Daniel Rowntree





Antonio Gatling



Source: Club Facebook/Website

Local shops



The Paint Rack: <https://thepaintrack.com/>

Tornado books & hobbies

An independent specialist rail, road, air, maritime transport and military book and model shop

Our shop is now open in Birmingham city centre - we look forward to seeing you soon

Open 9.30am - 5.00pm Tuesday - Saturday
(Closed Sunday & Monday)



Tornado Books and Hobbies: <https://www.tornadobookshop.co.uk/>

Local areas of interest – Museums



Coventry Air Museum: <http://www.midlandairmuseum.co.uk/>



Coventry Transport Museum: <https://www.transport-museum.com/>



British Motor Museum: <https://www.britishmotormuseum.co.uk/>

Club Contact Details

Richard Brooker

Club Secretary

Email: m.fowkes118@btinternet.com

Carl Lewis

Treasurer

Email: carl.l@ntlworld.com

Paul Redfern

***Gazette Editor/Comms/Webmaster / Event
Organiser***

Email: rdfrn_pl@yahoo.co.uk

Club E-Mail address

Email: cwipms2019@gmail.com

Internet and Facebook Links

IPMS UK	https://ipmsuk.org/
IPMS Work bench	https://www.facebook.com/groups/154243277932214/
Great War SIG	https://sites.google.com/site/greatwarsig/
“What if” SIG	http://www.whatifmodellers.com/index.php
Modern British Armour SIG	https://www.facebook.com/groups/modernbritisharmoursig/
Russian/Soviet Military Modelling	https://www.facebook.com/groups/1476745009291224/
IDF SIG	https://www.facebook.com/groups/472664806256973/
Bomb Disposal Model interest group	https://www.facebook.com/groups/293347344594784/
Sutton Spartans	https://www.facebook.com/groups/103320443753676/
Russian Wheels and tracks	https://www.facebook.com/groups/1539132379672734/
MODEL KIT INSTRUCTION SHEETS LIBRARY	https://www.facebook.com/groups/1214026292028249/
The Bundeswehr Sig	https://www.facebook.com/groups/337998709864855/

Show List 2021 August- December

Date	Show Name	Size of Show	Show Organiser	Status at time of publishing	Required/ Recommended/Optional	Web link/contact e-mail
August 1 st	Coventry and Warwickshire Summer show	Medium	Coventry and Warwickshire IPMS	Cancelled	Required	https://ipmsuk.org/calendar/coventry-and-warwickshire-ipms-summer-show-2021/
August 8 th	IPMS Avon and Lincombe Barn Model and Wargaming show	Large	IPMS Avon	Confirmed/Pending COVID Roadmap restrictions	Recommended Booked in	https://ipmsuk.org/calendar/ipms-avon-and-lincombe-barn-model-and-wargaming-show-2021/
August 15 th	Stoke on Trent Model show	Medium	Stoke on Trent Model Club	Confirmed/Pending COVID Roadmap restrictions	Recommended – Booked in	https://ipmsuk.org/calendar/stoke-on-trent-model-show-figureworld-west-2021/
September 11 th and 12 th	Statfold Barn Railway Model show (2 day show)	Very Small	Sutton Coldfield Model Club	Confirmed/Pending COVID Roadmap restrictions	Invited pending Interest by C&W Club TBC Recommended	
September 12 th	Chiltern Model Show	Medium	IPMS Chiltern	Confirmed/Pending COVID Roadmap restrictions	Optional	https://ipmsuk.org/calendar/chiltern-model-show-2021-proposed/
September 19 th	Wings and Things	Medium	IPMS Fenland and Spalding	Confirmed/Pending COVID Roadmap restrictions	Optional	https://ipmsuk.org/calendar/wings-things-2021/
September 26 th	St Ives Model show	Medium	IPMS Brampton	Confirmed/Pending COVID Roadmap restrictions	Recommended (Waiting for Conformation)	https://ipmsuk.org/calendar/st-ives-model-show-2021/
October 3 rd	Abington IPMS show	Medium	IPMS Abingdon	Confirmed/Pending COVID Roadmap restrictions	Optional	https://ipmsuk.org/calendar/abingdon-ipms-show-2021/
October 10 th	The Blue Lamp Model Expo	Medium/ Large	West Midlands Police Scale Model Club	Confirmed/Pending COVID Roadmap restrictions	Recommended- Booked in	https://ipmsuk.org/calendar/the-blue-lamp-model-expo-2021/
October 16 th	REME Museum Model show	Medium	REME Museum	Pending COVID Roadmap restrictions	Optional	https://ipmsuk.org/calendar/reme-museum-model-show-2021/

13 th &14 th November	Scale Model world 2021	V Large	IPMS UK	Pending COVID Roadmap restrictions	Required	https://ipmsuk.org/calendar/scale-modelworld-2021/
London Plastic Modelling show 2021	Guideline Publications	Medium	Guideline Publications	Pending COVID Roadmap restrictions	Optional	https://ipmsuk.org/calendar/london-plastic-modelling-show-2021/

Please Note:

Definitions

Required- Club Show members required

Recommended- regular shows attended by the club, with a table(s)

Optional- shows not attended by club, but optional to club members